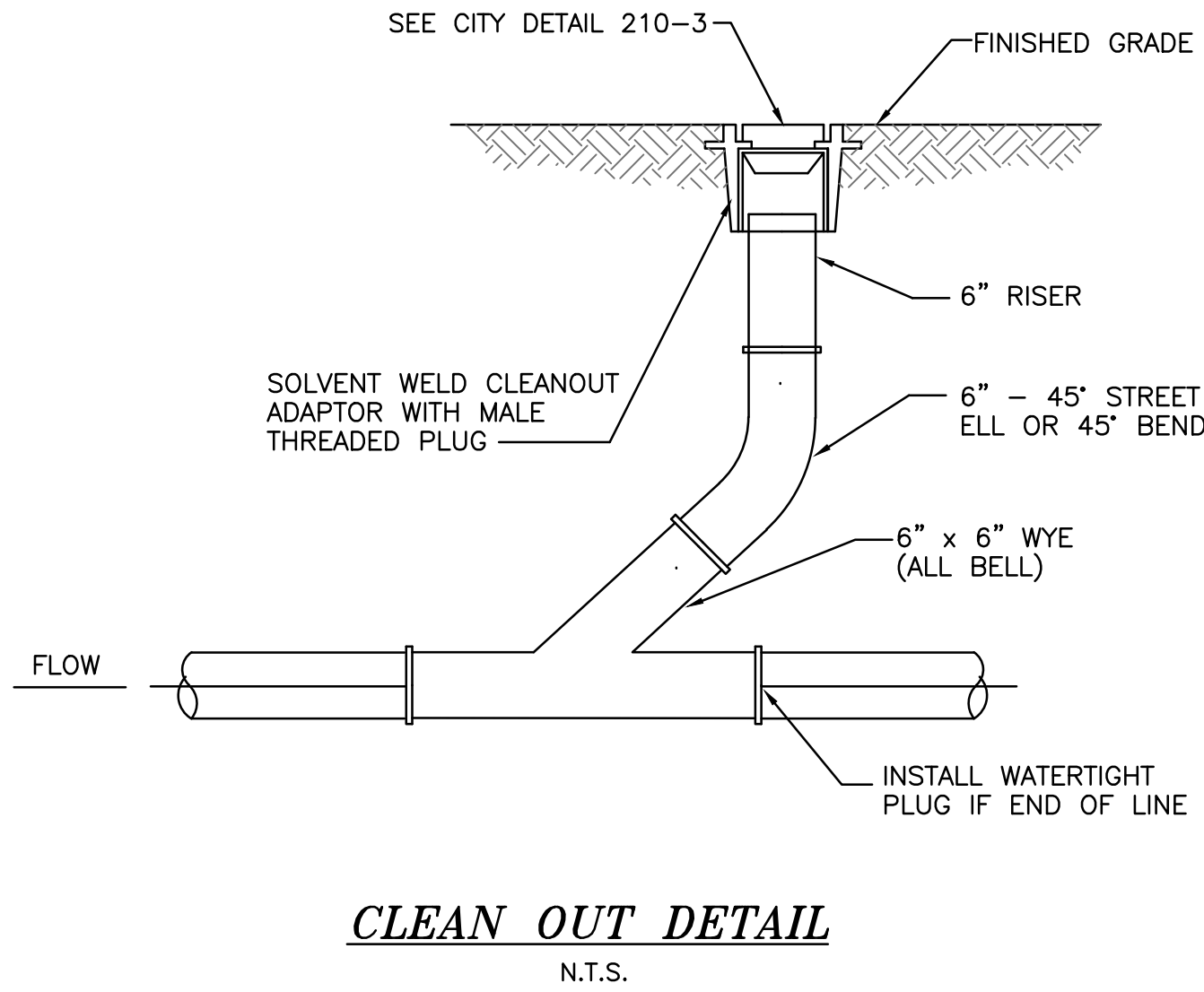
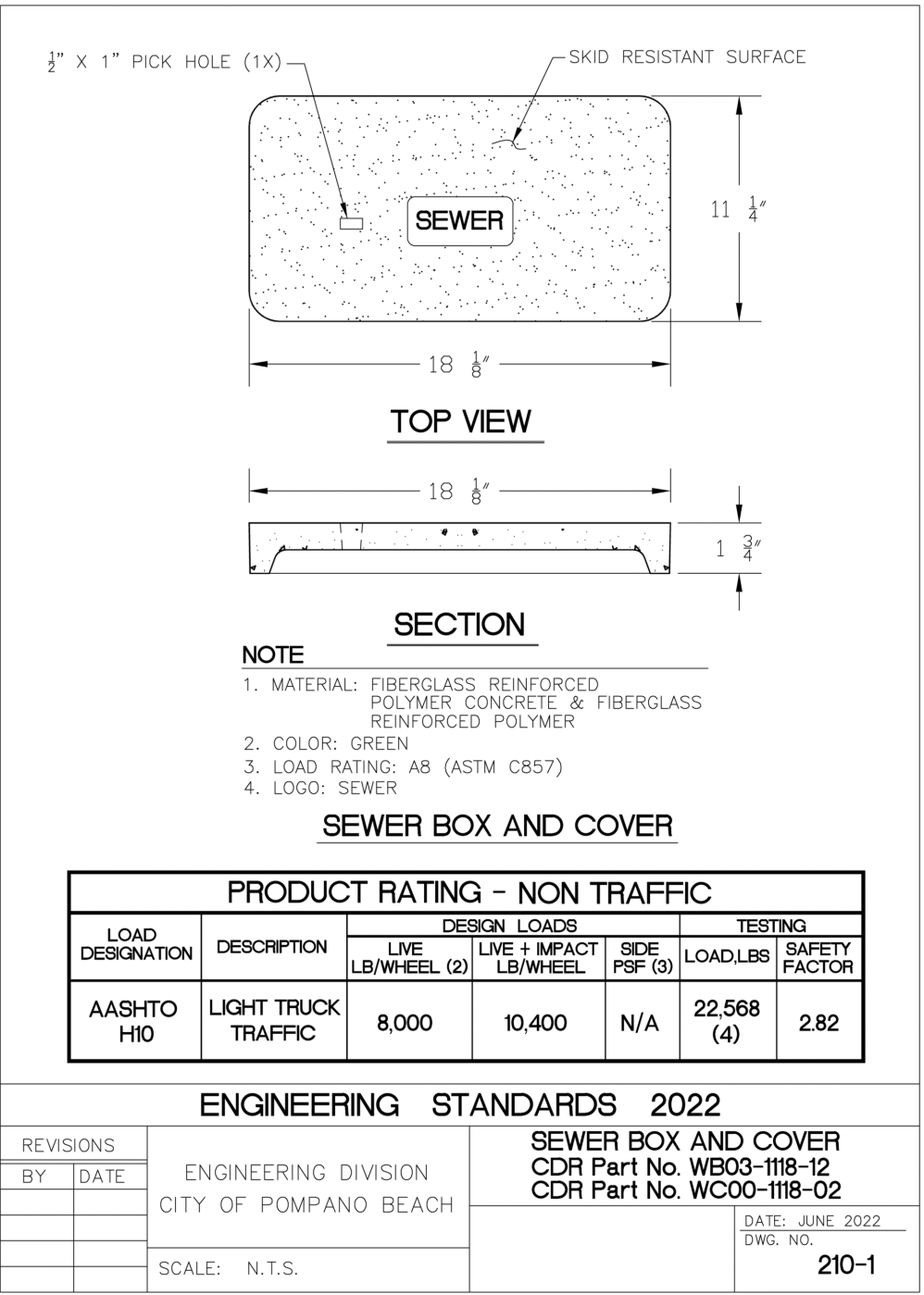
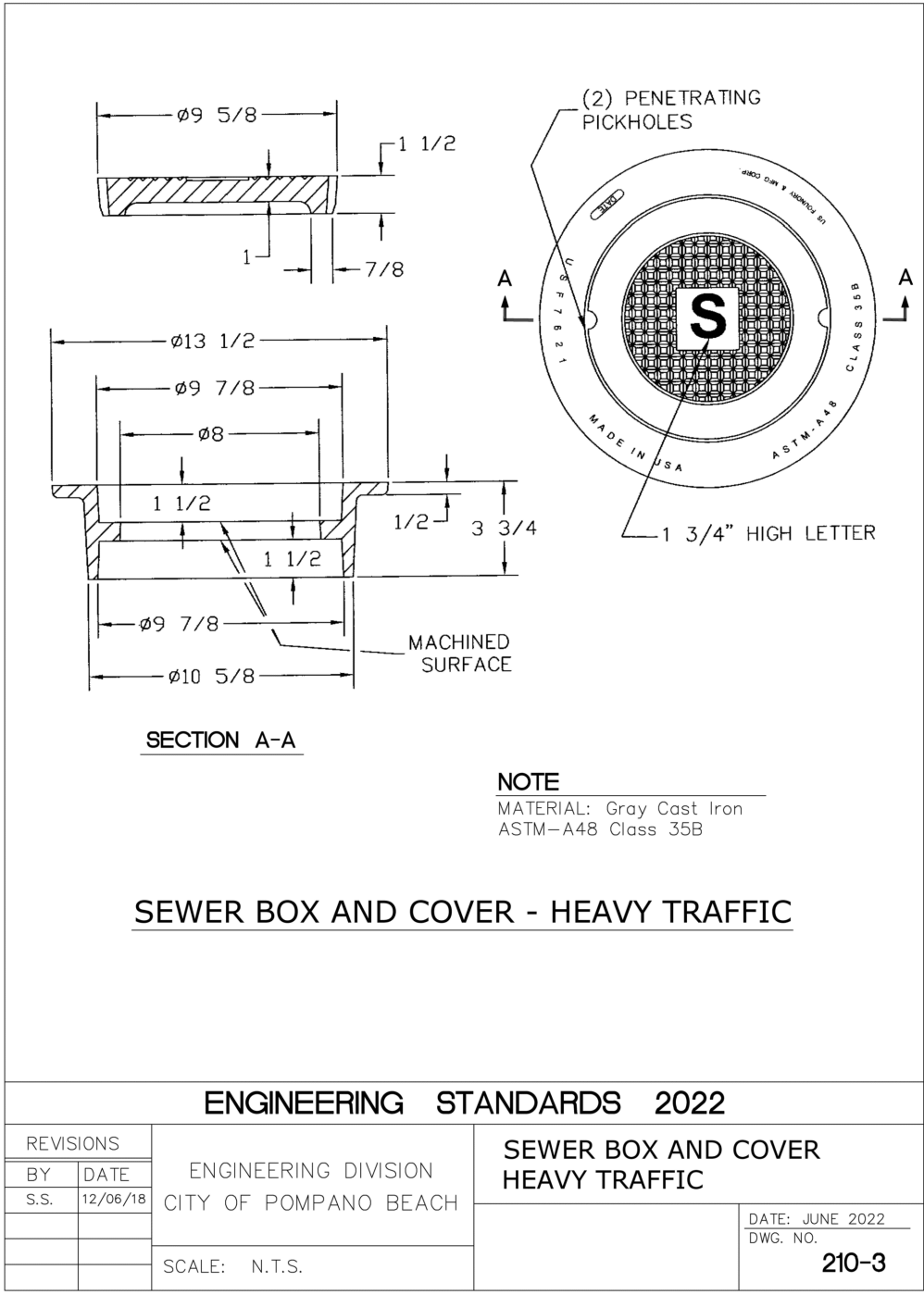
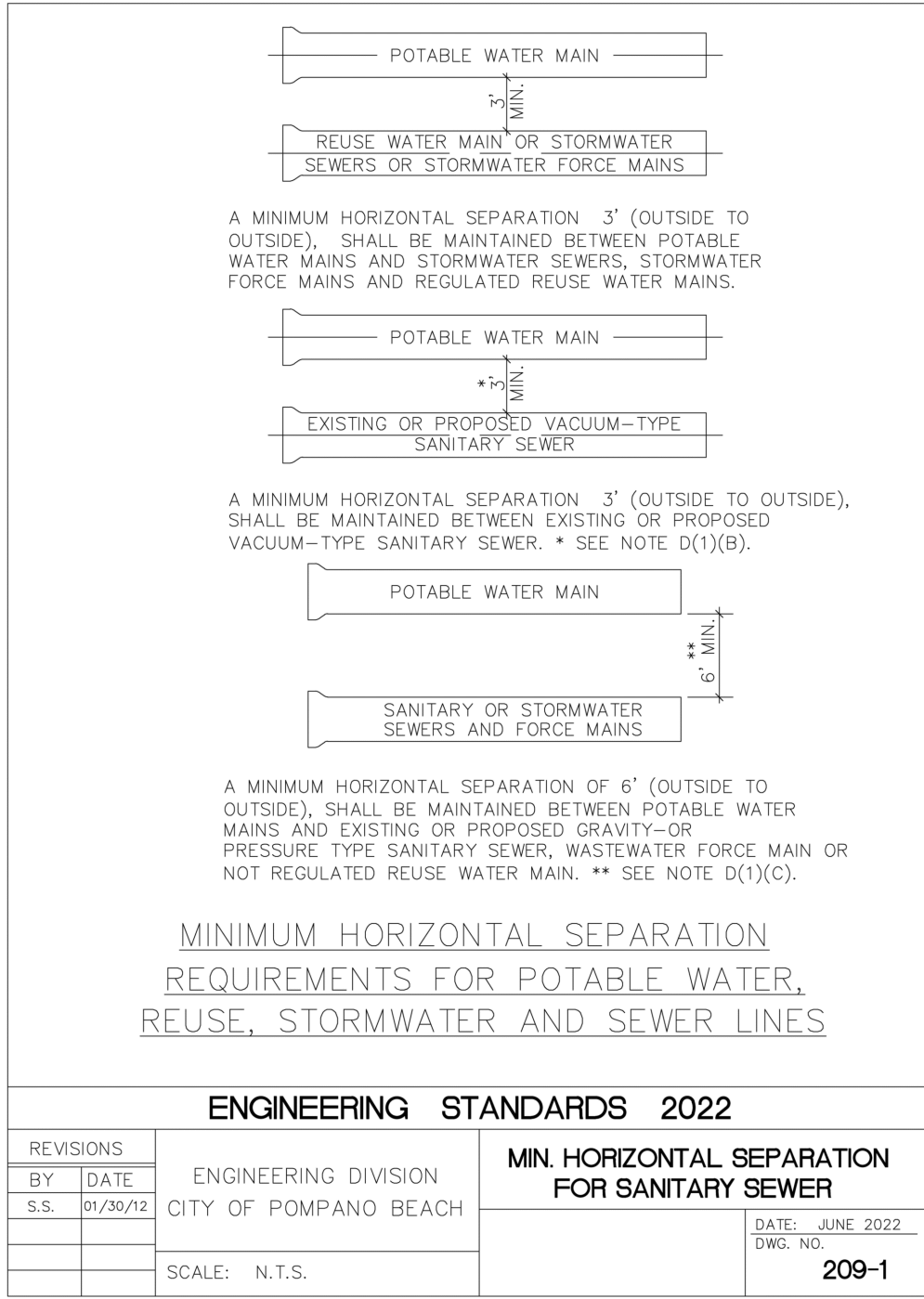
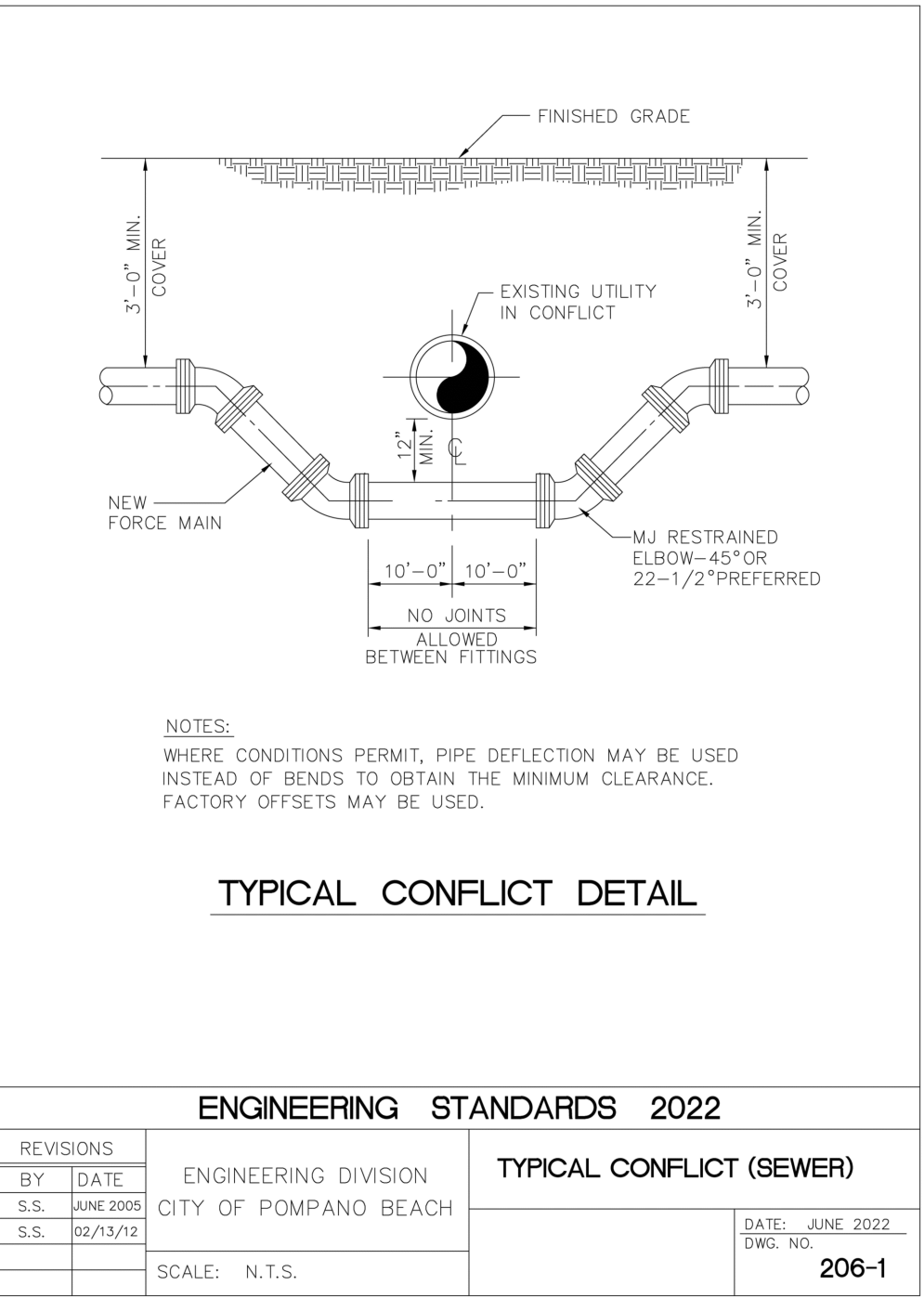
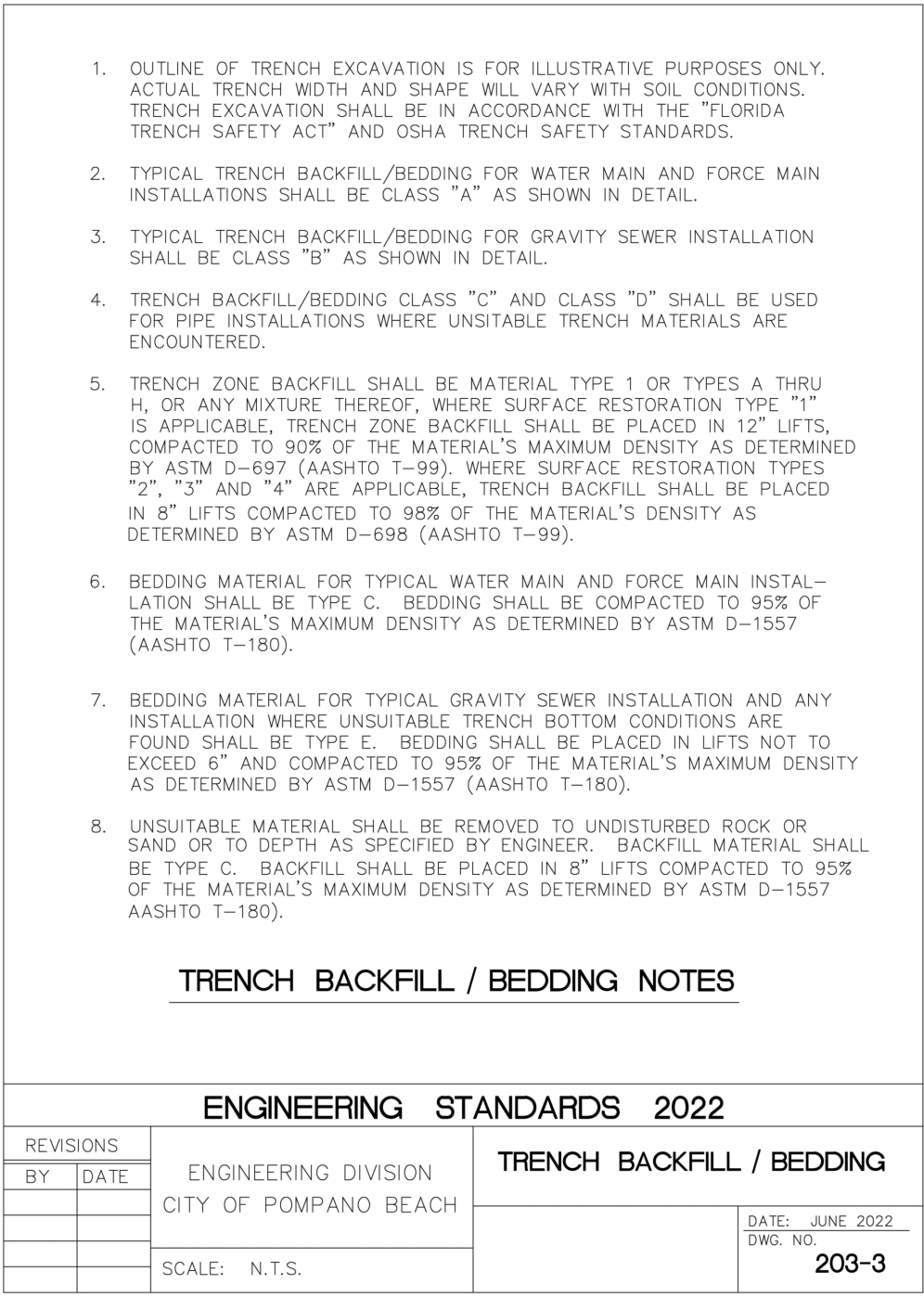
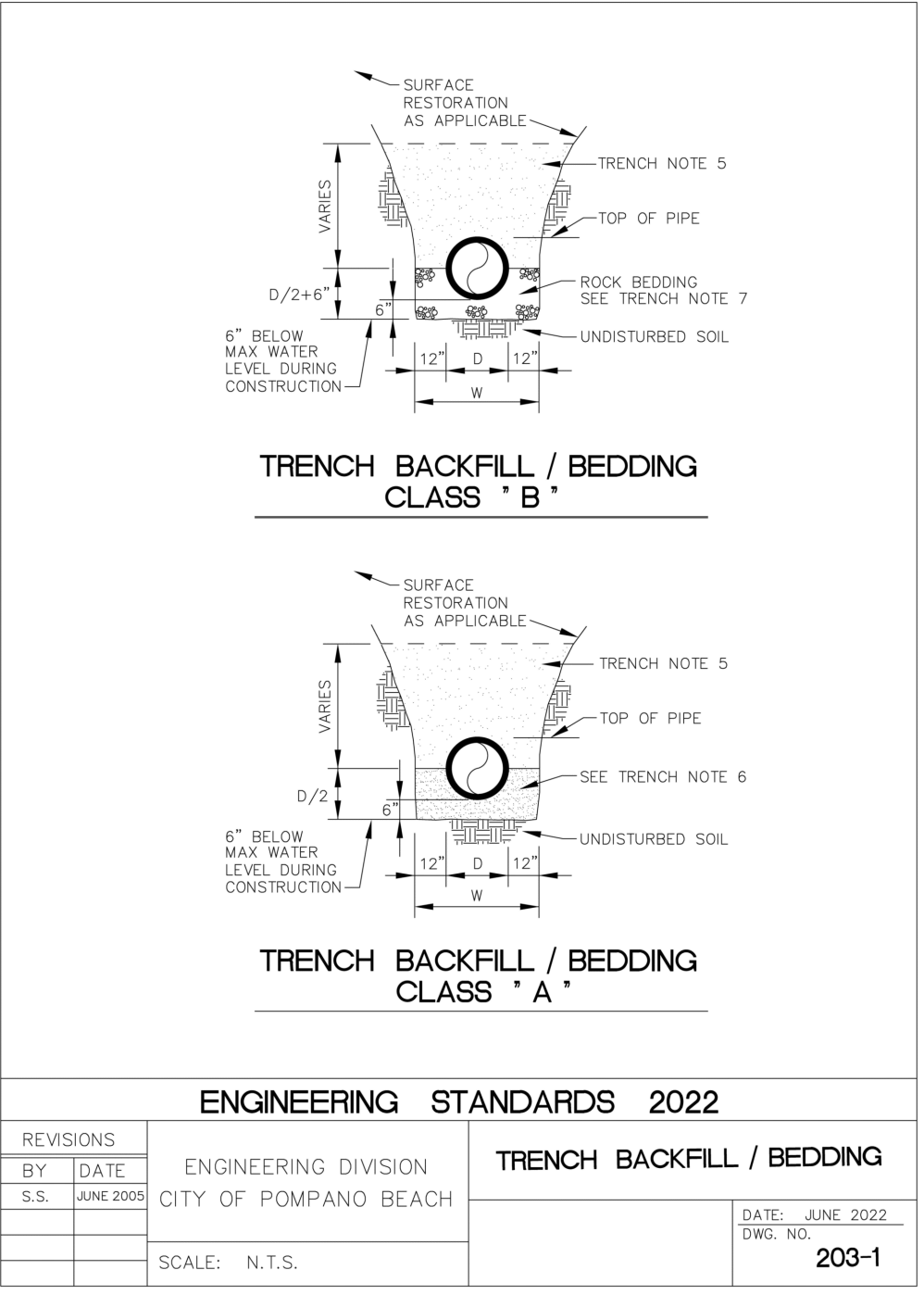
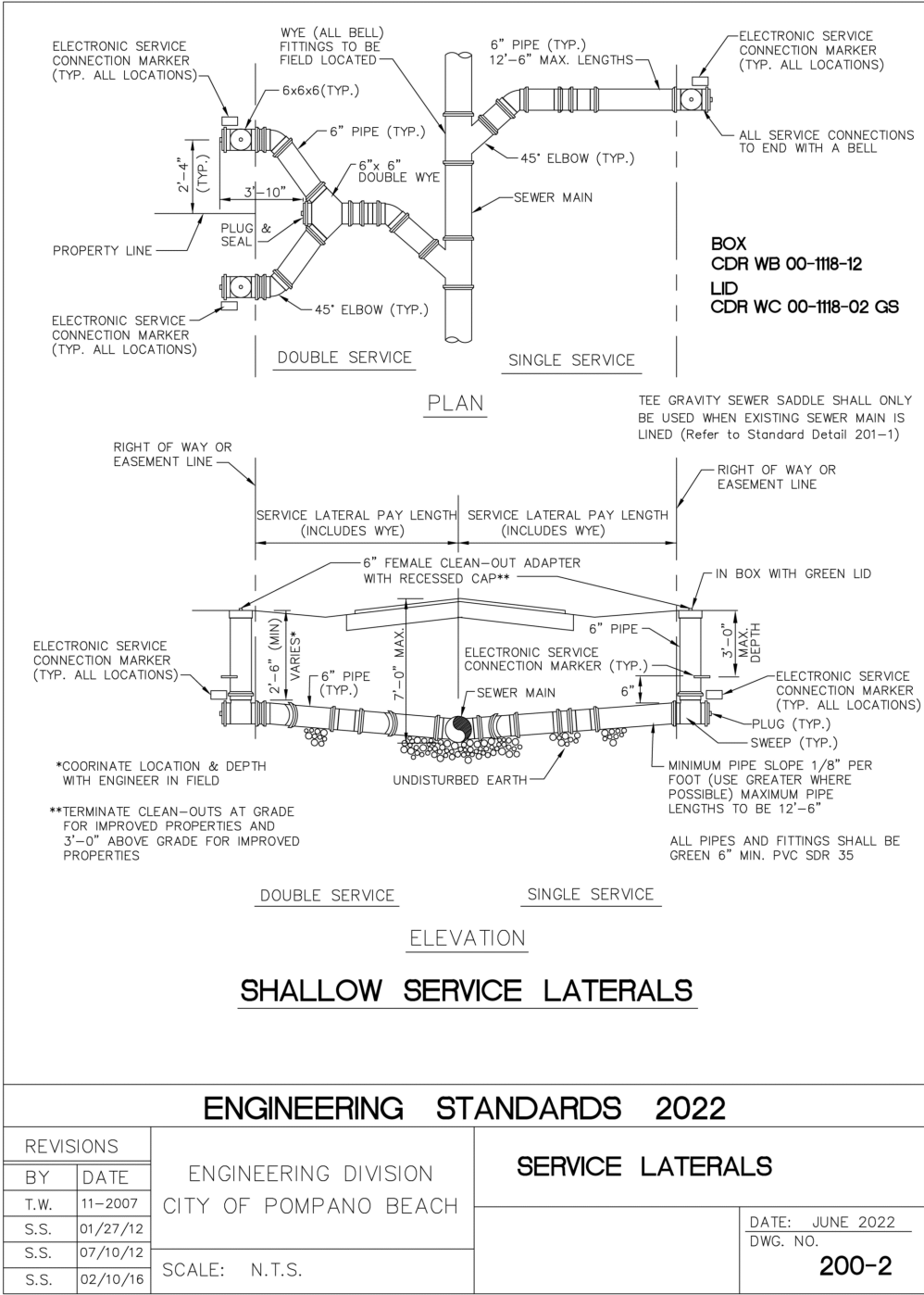
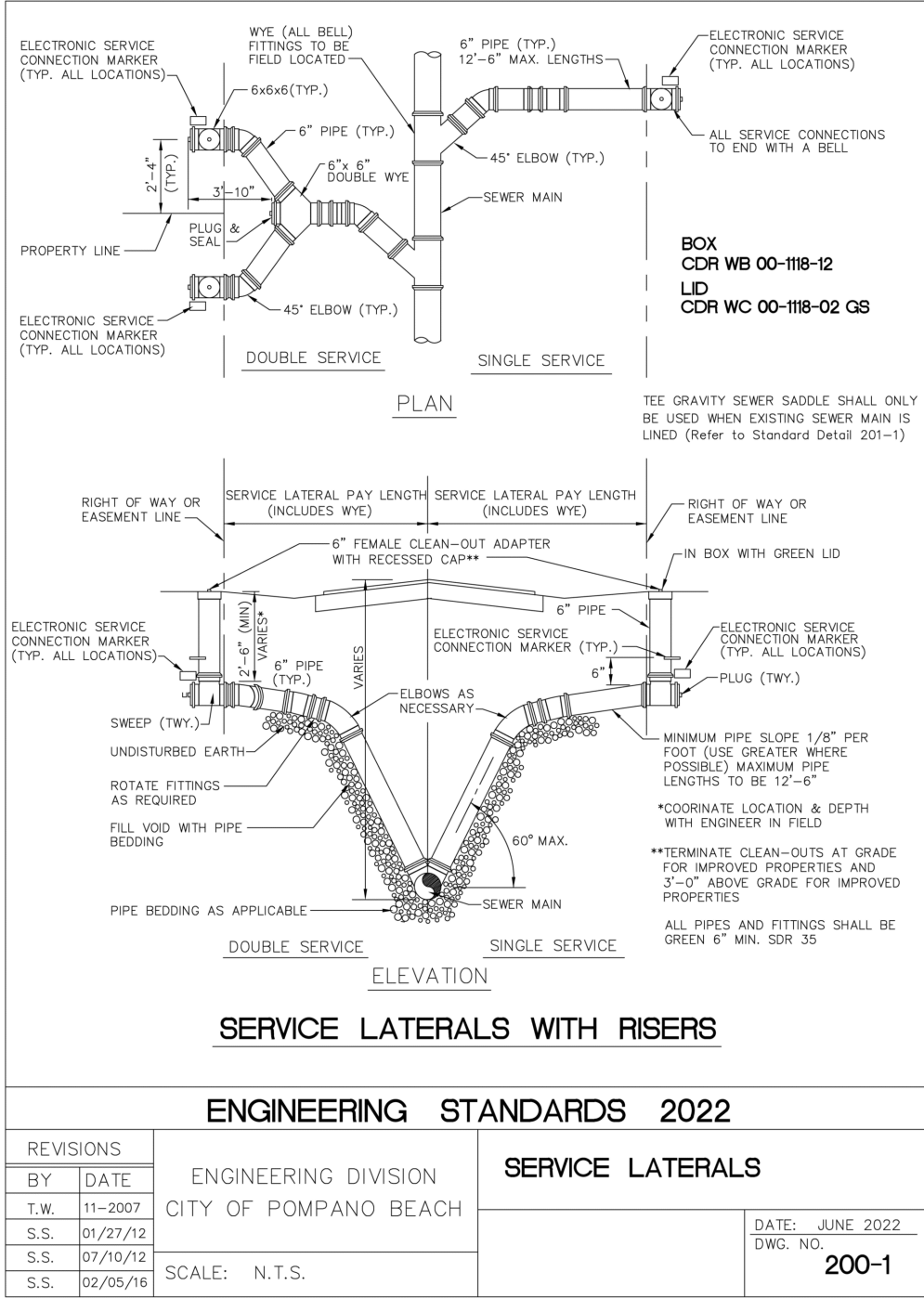


J:\CAD\23-16\CAD\_Files\23-16\_DETAILS.dwg - 10/4/2024 11:21 AM



FINAL APPROVAL

SCALE: N.T.S.

DRAWN BY: HS

DESIGNED BY: SCH

DATE: 02/29/24

CHECKED BY: SCH

FIELD BOOK: N/A

HOLLAND ENGINEERING

CIVIL ENGINEERING SOLUTIONS

301 SW 7th Street

Fort Lauderdale, Florida 33315

Phone: 954.367.0371

Certificate of Authorization 7325

SUSAN C. HOLLAND

STATE OF FLORIDA PROFESSIONAL ENGINEER

LICENSE No. 41831

REVISIONS

NO.	DATE	BY	CHK'D	DESCRIPTION
2	9/10/24	HS	SCH	CITY COMMENTS
3	10/3/24	HS	SCH	CITY COMMENTS

CONDO HOTEL

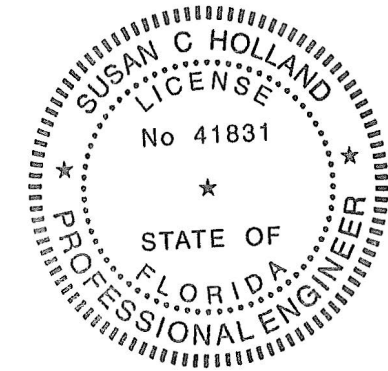
872 E. MCNAB ROAD

POMPAÑO BEACH, FLORIDA 33060

NO. OF SHEETS: 8

SHEET NO.: C-8

CAD FILE NO. 23-16



This item has been digitally signed & sealed by Susan C. Holland, P.E. Printed copies of this document are not considered signed and sealed and the signature must be verified on any electronic copies.



**P&Z**  
**SANITARY DETAILS**  
SCALE: N.T.S. PZ23-12000045

3/26/2025